

Olvid

Getting started

Guide for users with a corporate directory

Olvid Support

[Contact Olvid Support](#)

[Support on YouTube](#)

support@olvid.io



1. Install Olvid



Download Olvid from your device's store

or

Scan this QR code with your camera to find Olvid in your device's store.

Support: <https://olvid.io/faq/how-to-install-olvid/>

2. Create your Olvid profile



2 situations

You didn't have Olvid



CREATE
your professional profile

OR

You already had Olvid



SWITCH to
your professional profile

CREATE your Olvid professional profile

if you didn't have Olvid



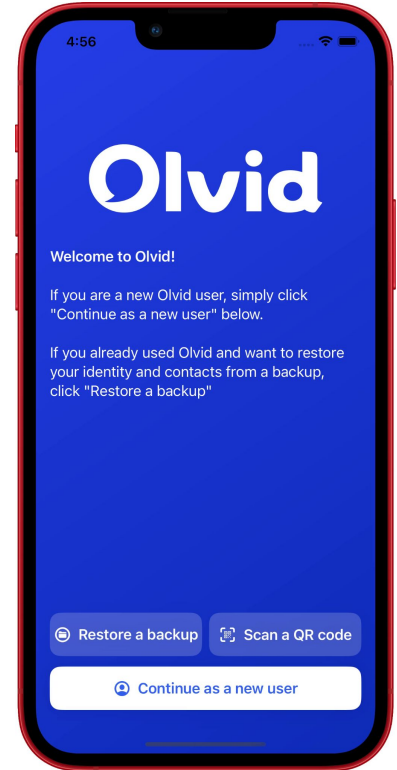
Insert here the QR code and
the configuration link of your
your company's directory.

Your administrator creates them in
the Olvid administration console
of your company.

1. Click on the link received from your administrator

OR

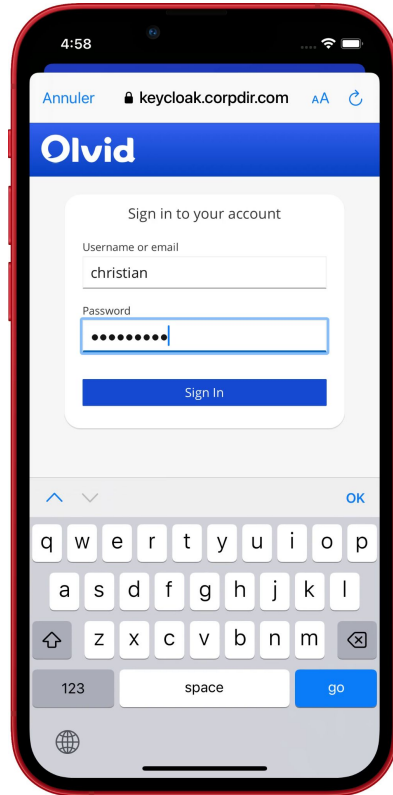
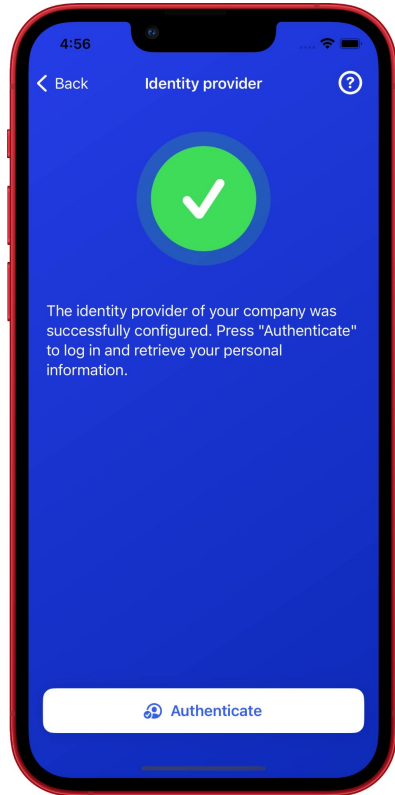
Open Olvid and tap
Scan a QR code, then scan the QR code on the left.





CREATE your Olvid professional profile

if you didn't have Olvid



2. Tap **Authenticate**.
3. **Enter** your username and password provided by your administrator.
4. Tap **Sign In**.
5. Check your name and tap **Create my ID**.

That's it! You can now [add contacts](#) from your company's directory.

SWITCH to your Olvid professional profile

if you already had Olvid




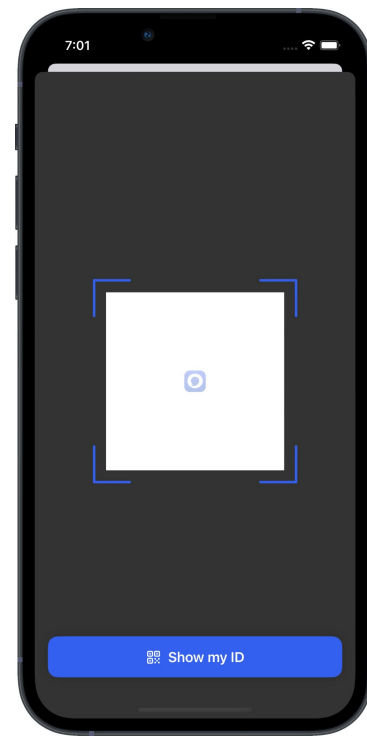
Insert here the QR code and
the configuration link of your
your company's directory.

Your administrator creates them in
the Olvid administration console
of your company.

1. Click on the link received from your administrator

OR

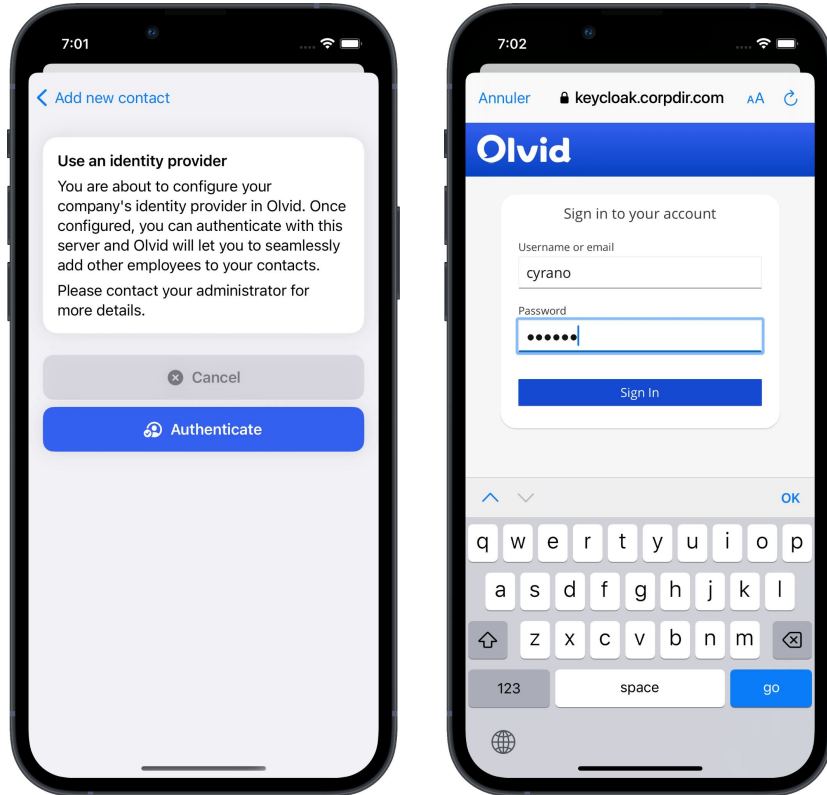
Open Olvid and tap  then **Scan a QR code**, then scan the QR code on the left.





SWITCH to your Olvid professional profile

if you already had Olvid



2. Tap **Authenticate**.
3. **Enter** your username and password provided by your administrator.
4. Tap **Sign In**.
5. Check your name and tap **Switch to a managed ID**.

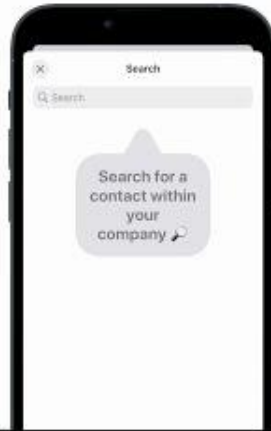
That's it! You can now **add contacts** from your company's directory.

3. Add contacts from your company's directory



Adding a contact
from your company
directory

Olvid

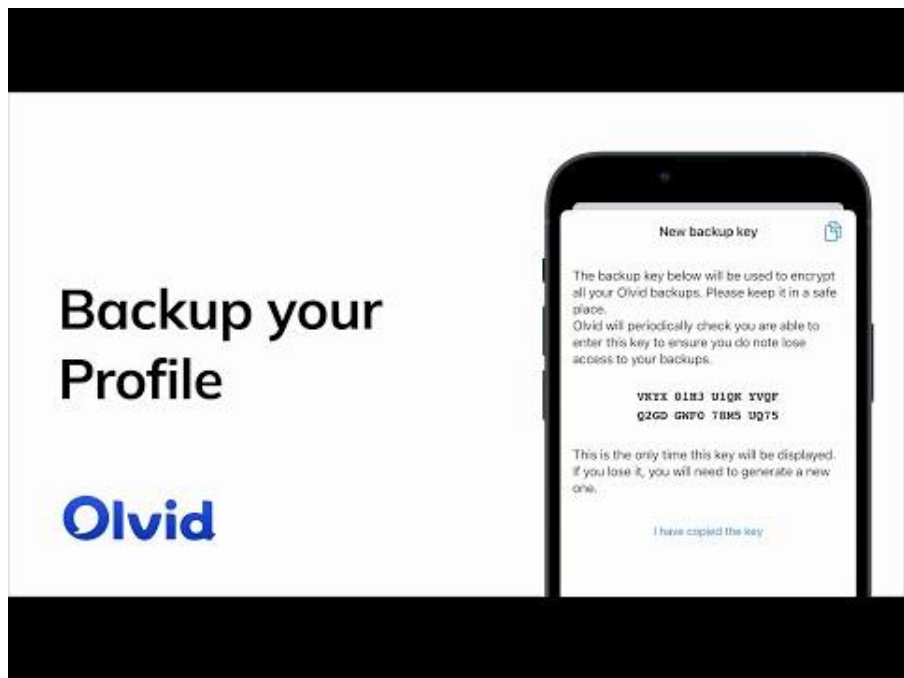


1. Tap **+**
2. Tap **Directory**.
3. Tap the **search box**. The contacts appear.
4. Refine your search.
5. Tap the name of the contact you want to add.
6. Confirm by Tapping **Add to contacts**.
A secure channel is created.
7. Tap **Chat**.

Support: <https://olvid.io/faq/add-contacts-from-your-company-directory>

<https://youtu.be/gl4fhXQizUo>

4. Backup your profiles



In anticipation of a change or loss of device, only a backup of your Olvid profiles with your original device will allow you to restore them on your next device.

Support:

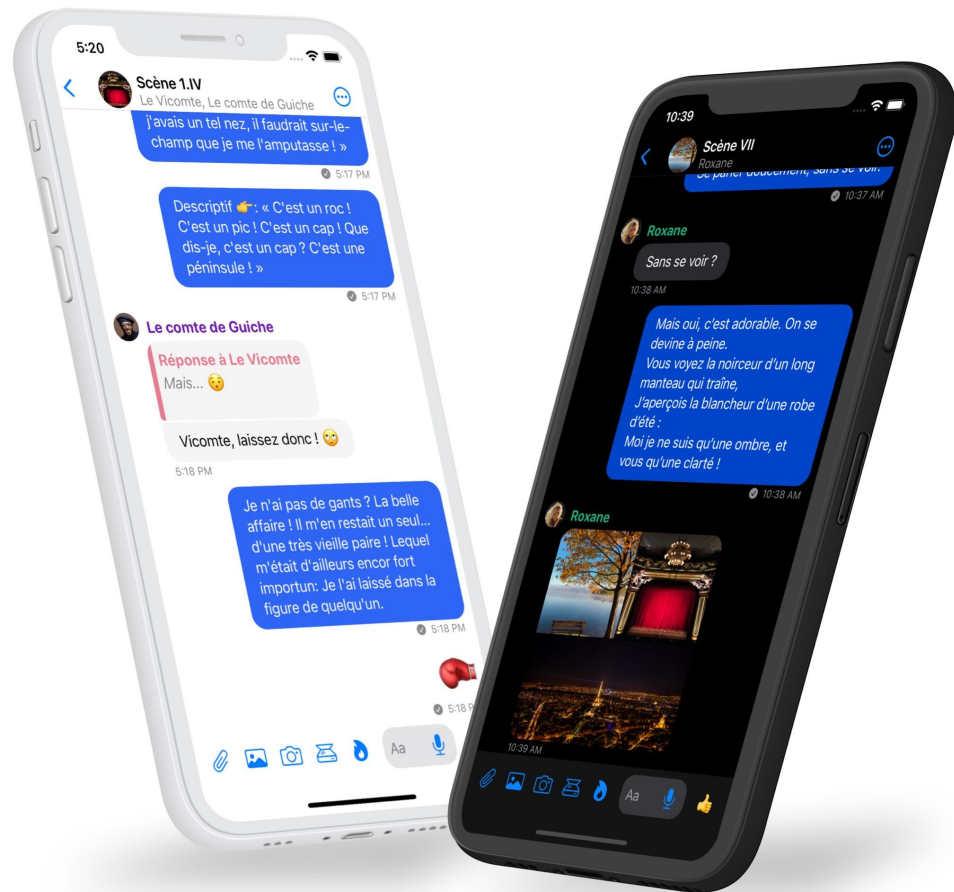
<https://olvid.io/faq/backup-your-profiles>

<https://youtu.be/6rTO2EhwiQg>

Olvid

Video Tutorials

Olvid Support



Add contacts face-to-face



Adding a contact
when face-to-face

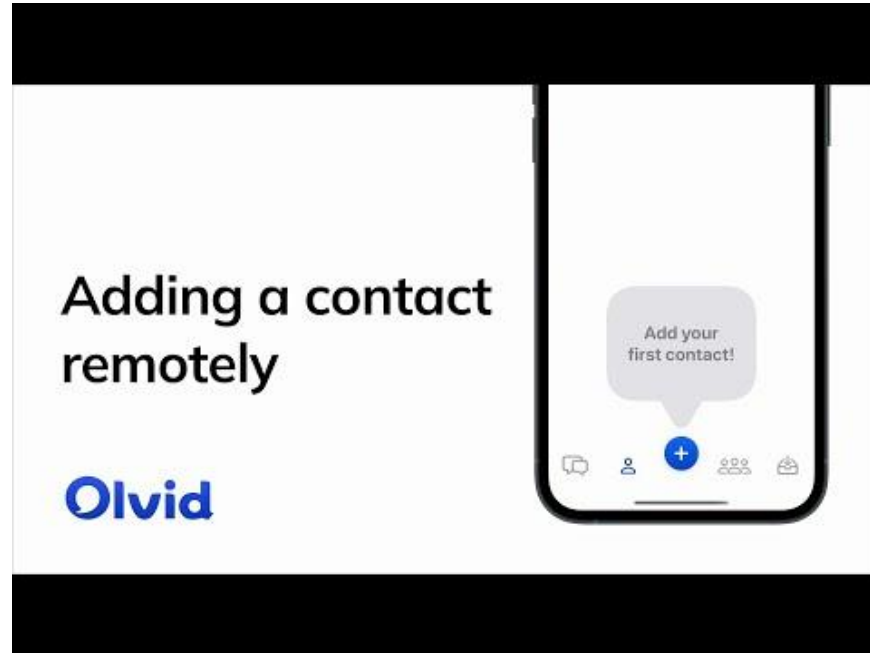
Olvid



 <https://youtu.be/kkrbMhxSOKQ>

Support: <https://olvid.io/faq/add-contacts-face-to-face>

Add contacts remotely



 <https://youtu.be/s0xy9cw30j4>

Support: <https://olvid.io/faq/add-contacts-remotely>

Introduce your contacts to each other



 <https://youtu.be/BFSwYXFo-K8> (FR)

Support: <https://olvid.io/faq/introduce-your-contacts-to-each-other>

Olvid Support



Support-FAQ

<https://olvid.io/faq>

Other manuals

<https://olvid.io/manuals>

Contact Olvid Support

<https://olvid.io/faq/contact-olvid-support>

For any questions afterwards

support@olvid.io